



The Chemical Company

Color Portfolio

BASF Performance Flooring

easy as...

123



UCRETE

SRS
FLOORING

SELBY

Ucrete® Finishes



Cream



Gray



Green



Blue



Red

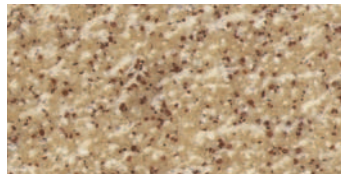


Charcoal

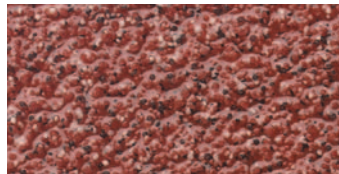


Black

Ucrete® HP/Q



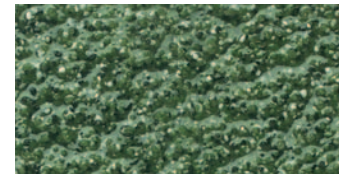
Cream



Red



Gray

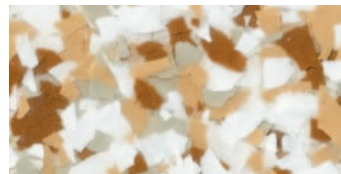


Green

Colors above serve only as a visual guide for initial selection of color. It is important to note that the colors seen will vary depending on your monitor settings, as well as by the specific settings for your color printer, should you print the results of your search. See your BASF distributor for actual color samples.

Decorative Flake Blends

For use in Selby® and SRS Degadur® Flooring Systems



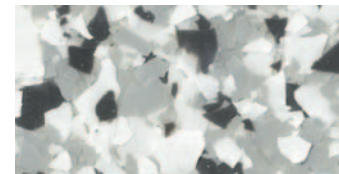
Sandstone



Nordic Green



Seamist



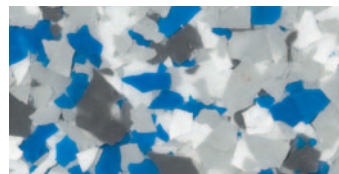
Limestone



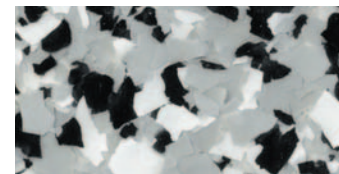
Buckskin



Aztec Marble



Cobalt Blue

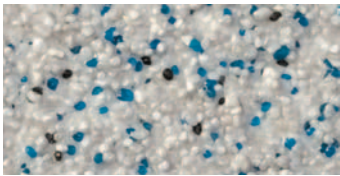


Granite

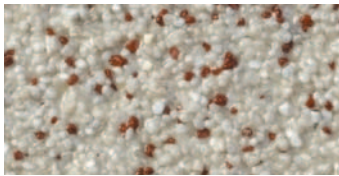
Custom Flake Blends are available.

Decorative Quartz Aggregate Blends

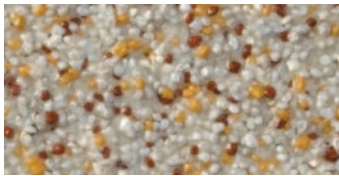
For use in Selby® and SRS Degadur® Flooring Systems



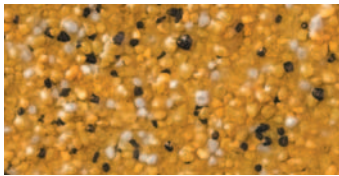
Arctic Ice



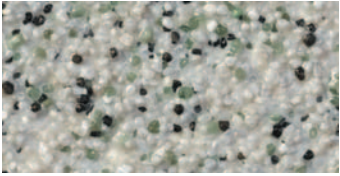
Cool Red



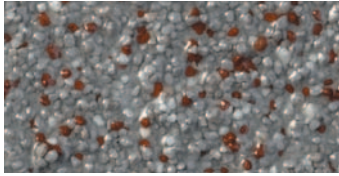
Sunstone



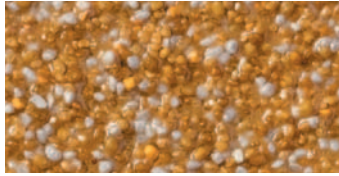
Harvest Moon



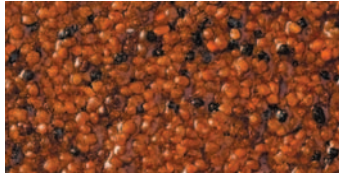
River Rock



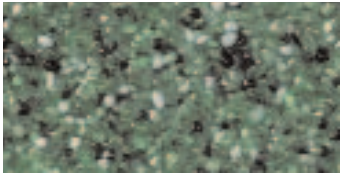
Cape Cod Gray



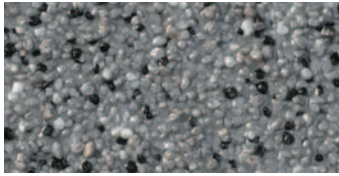
Marigold



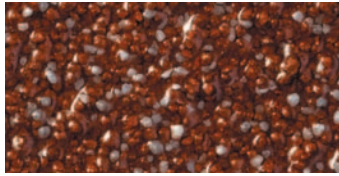
Adobe



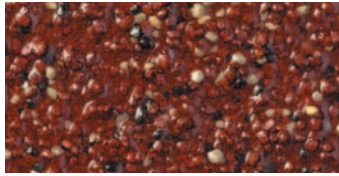
Emerald



Smoke

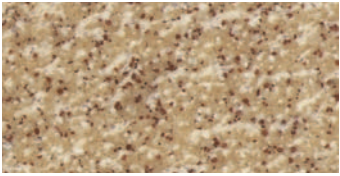


Scarlet Gray



Garnet

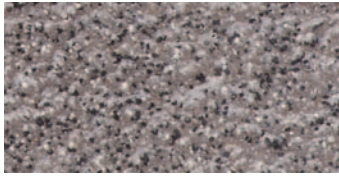
For use in Ucrete® and Selby® Flooring Systems



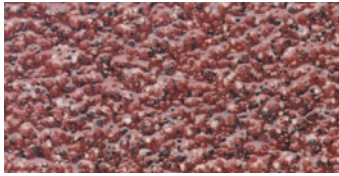
Cream (57)



Green (50)

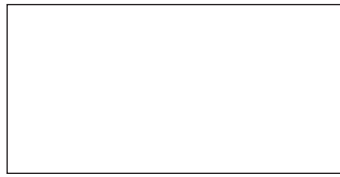


Gray (56)



Red (55)

Selby® Finishes



White



Light Tan



Safety Yellow



Gray



Light Gray



Tan



Red



Black

Also available in Clear.

Powder Pigments

For use in SRS Degadur Flooring Systems



White



Light Silver Gray



Pebble Gray



Safety Yellow



Silver Gray



Light Green



Concrete Gray



Beige



Dark Gray



Green



Blue



Red



Black

All of the color reproductions are intended to provide an indication of color. Actual color and texture of products may vary from those shown in brochure. Applied samples and test patches are recommended for color matching and final approvals.

BASF Construction Chemicals, LLC— Building Systems

889 Valley Park Drive
Shakopee, MN 55379

www.BuildingSystems.BASF.com

Customer Service 800-433-9517
Technical Service 800-243-6739

LIMITED WARRANTY NOTICE: Every reasonable effort is made to apply BASF exacting standards both in the manufacture of our products and in the information which we issue concerning these products and their use. We warrant our products to be of good quality and will replace or, at our election, refund the purchase price of any products proved defective. Satisfactory results depend not only upon quality products, but also upon many factors beyond our control. Therefore, except for such replacement or refund, BASF MAKES NO WARRANTY OR GUARANTEE, EXPRESS OR IMPLIED, INCLUDING WARRANTIES OF FITNESS FOR A PARTICULAR PURPOSE OR MERCHANTABILITY, RESPECTING ITS PRODUCTS, and BASF shall have no other liability with respect thereto. Any claim regarding product defect must be received in writing within one (1) year from the date of shipment. No claim will be considered without such written notice or after the specified time interval. User shall determine the suitability of the products for the intended use and assume all risks and liability in connection therewith. Any authorized change in the printed recommendations concerning the use of our products must bear the signature of the BASF Technical Manager.

This information and all further technical advice are based on BASF's present knowledge and experience. However, BASF assumes no liability for providing such information and advice including the extent to which such information and advice may relate to existing third party intellectual property rights, especially patent rights. In particular, BASF disclaims all WARRANTIES, WHETHER EXPRESS OR IMPLIED, INCLUDING THE IMPLIED WARRANTIES OF FITNESS FOR A PARTICULAR PURPOSE OR MERCHANTABILITY. BASF SHALL NOT BE RESPONSIBLE FOR CONSEQUENTIAL, INDIRECT OR INCIDENTAL DAMAGES (INCLUDING LOSS OF PROFITS) OF ANY KIND. BASF reserves the right to make any changes according to technological progress or further developments. It is the customer's responsibility and obligation to carefully inspect and test any incoming goods. Performance of the product(s) described herein should be verified by testing and carried out only by qualified experts. It is the sole responsibility of the customer to carry out and arrange for any such testing. Reference to trade names used by other companies is neither a recommendation, nor an endorsement of any product and does not imply that similar products could not be used.

For professional use only. Not for sale to or use by the general public.

Form No.1031439

© 2006 BASF 9/06 Printed in U.S.A.